

# APPLICATION SPOTLIGHT

## Firetrace Systems Protect Power Generators From Fire



Image 1 - Complete generator

Technology advancements provide the latest in ever-improving portable and backup power generation. Today, more and more businesses are utilizing self-contained power generation (*see Image 1*) to supply their electricity needs as well as provide emergency power. As demand and dependency increase, so does the need to take additional steps to safeguard these power generators from any possible downtime. As with almost any piece of equipment that utilizes a flammable fuel source, the potential for fire exists. A fire could result in significant downtime for power output, and the possibility for disruption of the business's operation could be quite expensive.



Image 2 - Firetrace system and discharge line

Firetrace offers a perfect fire protection solution for these types of remote, self-contained power generators. Our systems are completely pneumatic and as portable as the generators that they protect. With a Firetrace Indirect Low Pressure (ILP) system installed inside the generator, fast, accurate fire detection and suppression is *always* on guard (*see Image 2*). Flexible Firetrace Detection Tubing (FDT) quickly senses a fire when it first starts as the FDT is routed above, around and through all of the potential points of ignition within the generator housing (*see Image 3*). After detection, FM-200® (the fire suppression agent) is instantly delivered through fixed discharge lines or flexible high pressure hose (as in Image 2) and out strategically placed fixed nozzles (*see Image 4*). What's more, the Firetrace system in this installation incorporates a Firetrace Pressure Switch that is configured to automatically turn off the generator *and* cut off the flow of its natural gas fuel source, preventing any additional flammable fuel to ignite.

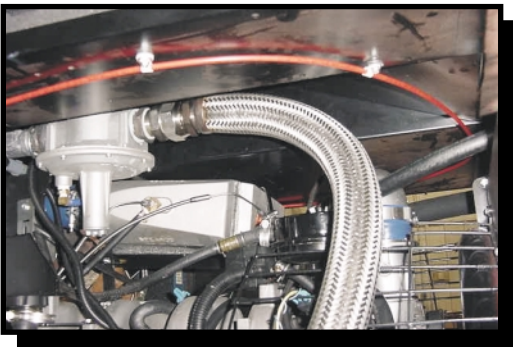


Image 3 - Firetrace Detection Tubing

This customer performed a full evaluation of Firetrace before committing to install 20+ systems on all of their generators. Their biggest concern was the power and fuel shutdown processes. As expected, Firetrace performed flawlessly with prompt shutdown and system discharge. Although an actual fire was not used in this test, the Firetrace system's UL Listing and FM Approval provided more than enough credibility for fire detection and suppression.



Image 4 - Fixed Distribution Nozzle

### FIRETRACE

AUTOMATIC FIRE SUPPRESSION SYSTEMS

7898 E. Acoma Drive, Suite 106, Scottsdale, AZ 85260 Toll-Free (866) 607-1218 [www.firetrace.com](http://www.firetrace.com)

<sup>1</sup> DTE Energy Technologies, Inc. does not specifically endorse Firetrace. When operated properly, their equipment is inherently safe from fire.