

FIRETRACE™

International



Firetrace S.A. LLC
 5000 N. 47th Way
 Suite B
 Omaha, NE 68131 USA

FIRETRACE
 International

Dry Chemical Agent Automatic Fire Suppression System

RECHARGE INSTRUCTIONS
 Recharge cylinders immediately after any use. Recharge cylinders immediately after any use. Recharge cylinders immediately after any use. Recharge cylinders immediately after any use. Recharge cylinders immediately after any use.

SAFETY INSTRUCTIONS
 Read and understand all instructions before use. Read and understand all instructions before use. Read and understand all instructions before use. Read and understand all instructions before use. Read and understand all instructions before use.

INSTALLATION AND OPERATION
 Installation and operation should be performed by qualified personnel. Installation and operation should be performed by qualified personnel. Installation and operation should be performed by qualified personnel. Installation and operation should be performed by qualified personnel. Installation and operation should be performed by qualified personnel.

WARNING
 Pressurized cylinders. Pressurized cylinders. Pressurized cylinders. Pressurized cylinders. Pressurized cylinders.

FIRETRACE
 International

MODEL NUMBER
 HFC-227a CLEAN AGENT

AGENCY NUMBER
 FT00001
 FT00002
 FT00003
 FT00004
 FT00005

RECHARGE SPECIFICATIONS
 (See Appendix A for details)

USA	10	New York
USA	10	April 19
USA	10	Black
USA	10	Black

UL LISTED **ULC**

Tel: 408-691-1210
 Fax: 408-315-1310

THE WORLD LEADER

in special hazard fire suppression solutions

Firetrace remains the first name in innovative fire suppression solutions and is the first to adapt to new technologies.

Globally accepted as the leader in special hazard fire protection, Firetrace International supplies powerful, flexible fire management solutions worldwide. Firetrace Aerospace, a wholly-owned subsidiary of Firetrace USA, applies the Firetrace core product line to the aviation and defense markets.

Since its inception in 2000, Firetrace International has been headquartered in Scottsdale, Arizona, USA. Growing from a modest 2,000 ft² (185 m²) facility,

Firetrace has now expanded to occupy over 80,000 ft² (7500 m²) of office and warehouse space in its current facility.

To ensure timely, effective support around the world, Firetrace also maintains sales offices in Sydney, Singapore, New Delhi, Dubai and Johannesburg.



FIRETRACE HISTORY

1980s

Firetrace systems developed as a solution for the frequent fires that occurred in farm harvesting equipment due to mechanical failures and the build-up of plant materials.

Firetrace's robust tubing-based system proved the ideal solution to the dirt, vibration and temperature variations that made traditional automatic solutions impractical.

2000

Firetrace International founded to market Firetrace's unique systems worldwide.

2011

Firetrace expanded its offering with a range of clean agent engineered systems, and the development of E4 - the next generation of engineered systems designed specifically for the unique properties of 3M™ Novec™ 1230.

250,000+

Firetrace systems have been installed around the world to date; in CNC machines, buses, electrical control panels, fume hoods, engine and generator compartments, hazardous storage cabinets and countless other applications.

2015

Firetrace International acquired by Halma plc, the market leader in specialist safety, health and environmental technologies.

2018

Firetrace launches its new Dual Action System for complex micro-environments, providing twice the protection of a single local application or total flooding system.



PRE-ENGINEERED SYSTEMS: The original is still innovating

Designed for simple installation, often very near the source of a potential fire, Firetrace is a self-activating suppression system that reliably suppresses fires in seconds. It provides a low maintenance, cost-effective solution to the problem of 'micro-environment' fire protection.

Micro-environments are applications where the hazard is typically contained within a critical enclosure, such as equipment, machines, vehicles, or storage compartments.

Firetrace systems can be installed in virtually any enclosed space where high-value assets are located, or where an increased risk of fire could be mitigated by an automatic fire suppression system.

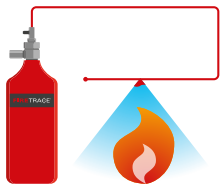
THE FIRETRACE ADVANTAGE

The effectiveness of a genuine Firetrace system comes from our proprietary polymer tubing that will rupture when exposed to the heat and flame of a growing fire.

This specialized Firetrace Detection Tubing is UL component listed, combines leak resistance, flexibility, durability, and precise temperature sensitivity, in order to react quickly when the heat from a fire is present. The Firetrace tubing connects to one of our custom engineered valves and a Firetrace cylinder that contains the best fire suppression agent for a particular hazard.

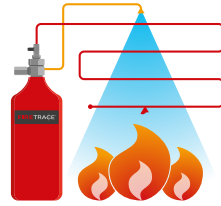
Firetrace systems operate without the need for any power source – external or battery – and require no releasing panel to operate.





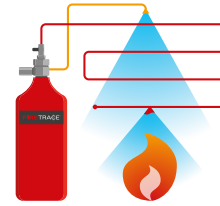
Direct release system

A local application system that uses the Firetrace detection tubing to both sense the fire and deliver the agent to the protected space. When exposed to fire the tubing bursts, forming a nozzle that directs the suppression agent.



Indirect release system

A total flooding system that uses the Firetrace detection tubing only as a sensing device. Upon detection, agent is delivered into the protected space using pipes or hoses and fixed nozzles.



Dual action system

Combines the functionality of the direct local application system and indirect total flooding system. By delivering agent through both nozzles and the tubing burst, a more complete and effective suppression is achieved.

Choosing the right agent

Firetrace's systems are compatible with most commercially available fire suppression agents, including:

- ⊕ FM-200™
- ⊕ Foam

- ⊕ Novec™ 1230
- ⊕ Black Widow

- ⊕ Dry Chemical (ABC, BC, D)
- ⊕ CO₂

FIRETRACE BENEFITS:



HIGHLY RELIABLE IN HARSH, EXTREME ENVIRONMENTS



NO ELECTRICITY REQUIRED OFFERING 24/7 UNINTERRUPTED SERVICE



TUBING EASILY ROUTED TO VIRTUALLY ANY HAZARD LOCATION



IMMEDIATE DETECTION AND DELIVERY



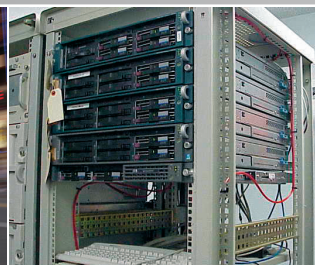
INEXPENSIVE INSTALLATION, MAINTENANCE AND RECHARGE



CHOICE OF CYLINDERS FOR GREATER FLEXIBILITY



NO FALSE ALARMS OR DISCHARGES



An evolution in engineered clean agent systems

The Firetrace Clean Agent Engineered System quickly suppresses fires and protects sensitive electronic equipment without causing harm and interrupting operations.

Why FM-200®?

Efficiency

- ❖ The unique features of FM-200® allow for fewer nozzles, thus a less complex piping design, as compared to other clean agents.
- ❖ The larger area of coverage per nozzle using FM-200® reduces the amount of agent needed to extinguish a fire.

Cost

- ❖ The price per pound of the FM-200® agent is lower than other clean agents.
- ❖ With less hardware required, FM-200® systems are more economical.

Risk

- ❖ Safety for humans if the system is discharged.
- ❖ Safe for electronic equipment, minimizing downtime if a fire occurs.

SYSTEM SIZES

Available in sizes ranging from 16 lbs to 1,211 lbs (7.5 kg to 550 kg)

Firetrace also offers Novec™ systems in these sizes.



FM-200™ engineered systems are UL listed. Novec™ engineered systems are UL listed and FM approved.



MORE PERFORMANCE

MORE DESIGN FLEXIBILITY

MORE SAVINGS

Using water-based fire systems can be as devastating as the fire itself. The Firetrace Clean Agent Engineered System is specially designed to suppress fires in spaces where critical electronic systems are stored or downtime due to the cleanup of other agents is not possible.

Clean	✓	Safe for Equipment	✓
Effective	✓	Cost Effective	✓
Fast Acting	✓	Space Efficient	✓
Broad Spectrum Fire Effectiveness	✓	Halon Systems Retrofit	✓
Safe for People	✓	Commercially Available	✓
Environmentally Responsible	✓	Long-Term Sustainability	✓

TYPICAL APPLICATIONS FOR THE FIRETRACE ENGINEERED CLEAN AGENT SYSTEMS:

- ✦ ARCHIVES
- ✦ ART GALLERIES
- ✦ BANK VAULTS
- ✦ CONTROL ROOMS
- ✦ DATA CENTERS
- ✦ ENERGY STORAGE SYSTEMS
- ✦ FLAMMABLE LIQUID STORAGE
- ✦ HISTORICAL BUILDINGS
- ✦ HOSPITALS
- ✦ LIBRARIES
- ✦ MUSEUMS
- ✦ OFFSHORE DRILLING
- ✦ PORTABLE ENCLOSURES
- ✦ TELECOMMUNICATIONS
- ✦ TEST LABS



Firetrace International
Headquarters

8435 N. 90th St., Suite 2,
Scottsdale, AZ 85258 USA
+1 888 607 1218 (USA & Canada toll free)
+1 480 607 1218
info@firetrace.com

Firetrace USA LLC
Middle East Office

Office 2117, Building 7WB,
Dubai Airport Freezone (DAFZA),
Dubai, United Arab Emirates
+971 56 7599490
info@firetrace.com

Over 500 authorized Firetrace distributors worldwide

From hazard analysis, quotations and installations, to service and system support; Firetrace distributors are there to help you reliably and effectively protect your assets.

Firetrace is the world leader in special hazard protection. Safeguard your critical equipment and micro-environments with pre-engineered systems using the world-renowned Firetrace Detection Tubing. Or for larger rooms and spaces take advantage of the game-changing engineered system with its new levels of flexibility in system design.



Firetrace currently has more than 20 international approvals and certifications, including UL, CE, FM, ULC & ISO9001. Approvals and certifications vary by system type and agent.

A HALMA COMPANY